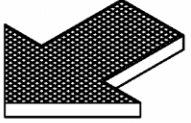
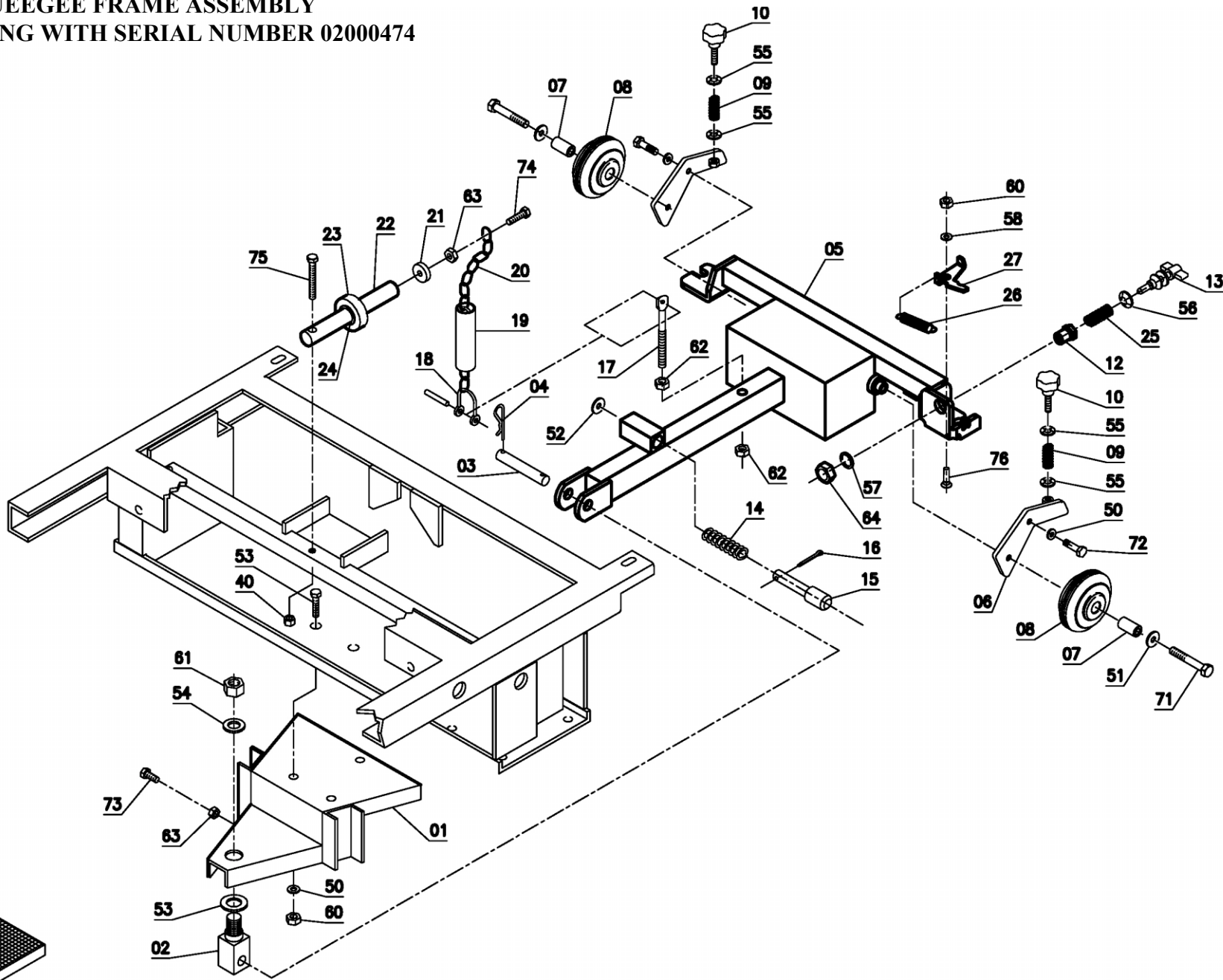


ScrubMaster 33B Insert

Modified Squeegee Assembly

Starting with Serial Number 02000474

33B SQUEEGEE FRAME ASSEMBLY
STARTING WITH SERIAL NUMBER 02000474

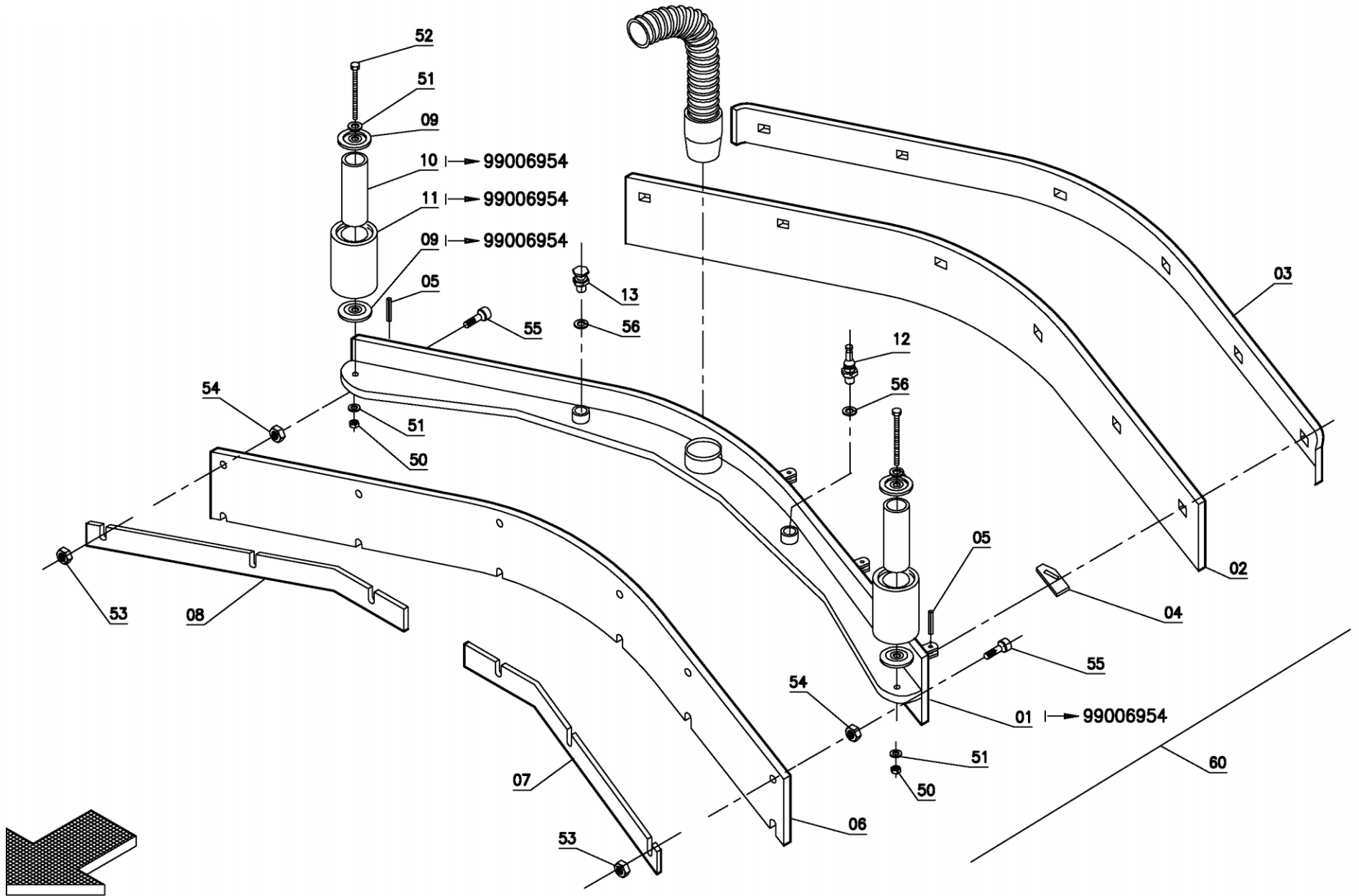


33B - DRAWING 06

| Item | Part Number | Description | Qty. |
|------|-------------|-------------|------|
| 1 | 40712060 | Support | 1 |
| 2 | 40712050 | Joint | 1 |
| 3 | 41203180 | Pin | 1 |
| 4 | 882130 | Clip | 2 |
| 5 | 40712150 | Arm | 1 |
| 6 | 40712070 | Support | 2 |
| 7 | 69104070 | Bushing | 2 |
| 8 | 67010060 | Wheel | 2 |
| 9 | 69210590 | Spring | 2 |
| 10 | 74008010 | Knob | 2 |
| 12 | 40712180 | Bushing | 1 |
| 13 | 40712170 | Adjuster | 1 |
| 14 | 69210040 | Spring | 1 |
| 15 | 40312100 | Push button | 1 |
| 16 | 925603 | Split Pin | 1 |
| 17 | 40312300 | Adjuster | 1 |
| 18 | 74400017 | Split Pin | 1 |
| 19 | 67404250 | Sheath | 1 |
| 20 | 40312310 | Chain | 1 |
| 21 | 70510801 | Bearing | 1 |
| 22 | 40312230 | Arm | 1 |
| 23 | 40312290 | Roller | 1 |
| 24 | 70220008 | Ring - Snap | 2 |

| Item | Part Number | Description | Qty. |
|------|-------------|-------------|------|
| 25 | 69210660 | Spring | 1 |
| 26 | 69220560 | Spring | 1 |
| 27 | 42312140 | Coupler | 1 |
| 50 | 980039 | Washer | |
| 51 | 980064 | Washer | |
| 52 | 980044 | Washer | |
| 53 | 980068 | Washer | |
| 54 | 71116004 | Washer | |
| 55 | 980053 | Lock Washer | |
| 56 | 71312002 | Lock Washer | |
| 57 | 71116003 | Washer | |
| 58 | 71108005 | Washer | |
| 60 | 924033 | Lock Nut | |
| 61 | 71021002 | Lock Nut | |
| 62 | 924053 | Nut: M10 | |
| 63 | 924035 | Nut: M8 | |
| 64 | 71011601 | Nut | |
| 71 | 70911024 | Screw | |
| 72 | 70910802 | Screw | |
| 73 | 964086 | Screw | |
| 74 | 70910810 | Screw | |
| 75 | 964084 | Screw | |
| 76 | 70900804 | Screw | |

SQUEEGEE ASSEMBLY, 43" Part Number A9603006
STARTING WITH SERIAL NUMBER 02000474



33B - DRAWING 07

| Item | Part Number | Description | Qty. |
|-----------|-----------------|-------------------------------|----------|
| 1 | 69603080 | Squeegee Body | 1 |
| 2 | 67703170 | Central Rubber 33 Shore | 1 |
| 2A | 67703160 | Central Rubber 40 Shore (std) | 1 |
| 2B | 67703180 | Rear Rubber Oil-Resistant | 1 |
| 3 | 68803090 | Blade | 1 |
| 4 | 41811060 | Plate | 6 |
| 5 | 71405002 | Spring Pin | 6 |
| 6 | 67703150 | Front Rubber | 1 |
| 7 | 68803080 | Left Blade | 1 |
| 8 | 68803070 | Right Blade | 1 |
| 9 | 40411020 | Special Washer | 4 |
| 10 | 40411010 | Pin | 2 |
| 11 | 67020080 | Wheel | 2 |
| 12 | 40311060 | Stud Bolt | 1 |
| 13 | 40711010 | Stud Bolt | 1 |
| 50 | 71021002 | Lock Nut | |
| 51 | 71110002 | Washer | |
| 52 | 70911030 | Screw | |
| 53 | 71020603 | Lock Nut: M6 | |
| 54 | 924054 | Nut: M6 | |
| 55 | 964110 | Screw: M6x25 | |
| 56 | 71112006 | Washer | 2 |
| | | | |
| | A9603006 | Squeegee Assembly, 43" | |

New parts are in Bold print.