



Pacific

DIRECT DRIVE UHS BURNISHERS MODELS

1517	1517P
2017	2017P
2517	1520P
1520	2020P
2020	
2520	

Operating & Maintenance Instructions

Introduction

READ THIS BOOK

This operator's book has important information for the use and safe operation of this machine. Read this book carefully before starting the machine. Keep this book and tell all operators to read the book. If you do not follow the instructions, you can cause an injury, or damage equipment, furniture or buildings.

All directions given in this book are as seen from the operator's position at the rear of the machine.

For new books, write to Pacific Floor Machine Company, Inc., 2259 S. Sheridan, Muskegon, Michigan 49442-6252.

Carefully inspect all components to insure that there is no concealed freight damage. If such damage is discovered, file a "CONCEALED DAMAGE REPORT" immediately with the delivering carrier.

The contents of the Manual are based on the latest product information available at the time of publication. Pacific reserves the right to make changes or improvements to its machines without notice.

FOR YOUR CONVENIENCE, RECORD THE MACHINE MODEL AND SERIAL NUMBERS HERE:

MODEL _____

SERIAL _____

OPERATING AND MAINTENANCE — ULTRA HI-SPEED

WARNING! For safe operation of this machine, follow the instructions given in this booklet and the training given by your supervisor. Failure to do so can result in personal injury and/or damage to machine and property!

DO NOT OPERATE MACHINE IN AN EXPLOSIVE ENVIRONMENT.

OPERATING

To prepare the machine for operation, make sure it is of the correct voltage and properly assembled. If in doubt, ask your supervisor.

Your unit operates in a straight line forward motion, rather than the usual side-to-side motion of a conventional single disc machine. Be prepared by having your floor area cleared and ready for the fast action of a burnisher.

Prepare the floor area by sweeping, dusting or mopping as needed. Check the proper application recommendations and procedures found on the label of your finish container. **CALL YOUR SUPERVISOR IF IN DOUBT.**



WARNING! NEVER USE THIS MACHINE WITH FLAMMABLE OR EXPLOSIVE MATERIAL.

FOR BURNISHING — Select the correct clean floor pad (your supplier can help you). The lighter color floor pads (buff or white) are normally used for the burnishing procedure.



NEVER OPERATE THE MACHINE WITHOUT THE FLOOR PAD INSTALLED!

It is very important to select clean dry pads of uniform thickness. Pads with high or low sections or hard or soft spots, are unacceptable. Pads of open weave are recommended as close weave pads tend to load up fast, bog down the machines, cause circuits to overload and generally give poor results.

Tip the machine back to expose the tufted pad driver. Remove the pad locking plate. Carefully center the pad onto the pad driver and secure with the locking plate. Check for level, centering and flatness.

Set the machine upright onto the pad. Plug the machine's power cable into a properly grounded outlet (see Safety Instructions). Next, release the handle locking knob and allow the handle to lower into a comfortable position. Secure the handle locking knob so as to allow the operator to easily control the brush pressure.

Depress the handle slightly to elevate the pad from the floor. This is to avoid burning the floor on initial start up, before the operator is ready to move forward. Pull out on the "Watch Dog" Safety Lock button and start the machine by depressing either the left or right switch levers.

When ready to move forward, lower the machine head and pad to the floor and proceed forward, in a straight line, at a steady pace. If the machine labors or slows down excessively, relieve the condition by adjusting the caster wheel down: inward (clockwise).

CIRCUIT BREAKER—A circuit breaker is used to protect the motor. If the motor draws high amperage the circuit breaker will stop the motor. The circuit breaker reset button is located in the front of the switch housing. Push the reset button to restart the motor. If the motor continues to stop reduce the pad pressure by adjusting the caster wheel and cleaning or changing the floor pad. If this does not correct the problem consult an authorized service person.

DAMP STRIPPING—If your floor's hard burnished finish has dirtied before it is time to strip and re-coat, you can extend the finish's life by the Damp Scrub or Strip Method. First change the machine's pad to an open weave, non-loading, stripper pad. This type of pad is more aggressive and shears micron-thin layers of old dirty finish from the top coating. This method uses a light mop-coat of ammonia-free, neutral cleaner to aid the pad's action and to control penetration. **TALK TO YOUR CHEMICAL SUPPLIER FOR COMPLETE INSTRUCTIONS ON DAMP STRIPPING.**

Maintenance

Store the machine in a clean dry area. Wipe the entire machine and cord down with a clean cloth. Wrap the machine's electrical cord onto the handles and the cord hook provided. **CHECK** the cord and plug for nicks, cuts or damage. Report these to your supervisor for correction. Remove the pad and clean thoroughly.



WARNING! Always disconnect the machine's electrical plug from the electrical outlet before performing any service, maintenance, pad changing or inspection of the machine.

The motor is lubricated for life under normal use. No oiling or greasing is necessary. If machine is used in dusty areas or is used for spray buffing, it is suggested the motor be blown out by compressed air or exhaust from a vacuum. This will keep the motor clean and allow clean passage of air for ventilation and prevent overheating. If you have any questions regarding maintenance of your floor machine, **ASK YOUR SUPERVISOR.**

Carbon Brush Inspection

Pacific installs longlife 3000 hour carbon motor brushes in their motors and equips the D.C. rectified burnishers with a carbon brush wear indicator light to signal carbon brush change.

OPERATOR AND SAFETY INSTRUCTIONS

To assure the safe operation of this machine, you must read and understand all warnings and instructions in this book. If you do not understand, ask your supervisor.



WARNING: If you do not follow the instructions given in a warning, you or other persons could be injured, or damage could occur to the machine and/or property.

1. You must be trained to operate this machine. This machine is to be operated for its intended use only.
2. Do not operate this machine unless it is completely assembled.
3. Do not connect this machine to improper voltage. Always use a 3-wire grounded electrical supply. See electrical section below.
4. To prevent electrical shock, always disconnect the electrical plug of the machine from the electrical outlet before performing any repairs, maintenance or cleanup and when leaving the machine unattended.
5. To prevent electrical shock, keep the machine surface dry. Do not subject to rain. Store the machine in a dry building area. Clean the machine with a clean dry cloth only.
6. Do not use this machine near flammable liquids, solvents, gas, vapors or dust. Do not use flammables to clean this machine.
7. Maintenance or repairs to this machine must be performed by a qualified or authorized person.
8. Avoid damage to the machine's electrical cord. Always lift the machine over the cord. Do not run the machine over the electrical cord.
9. If warning or instruction labels are missing or damaged, order new replacement labels from the Pacific Floor Machine Company.



WARNING! Electrical Grounding Instructions

Grounding Instructions

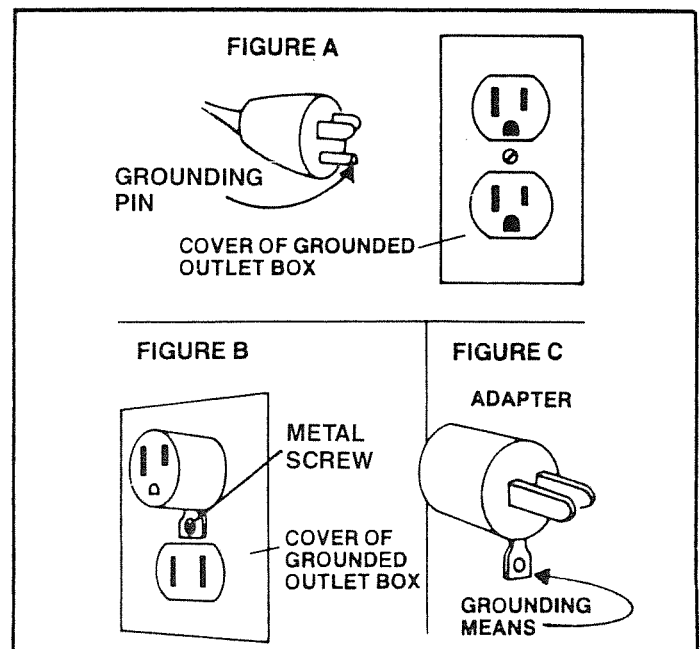
This floor finishing machine shall be grounded while in use to protect the operator from electric shock. The machine is provided with a three-conductor cord and a three-contact grounding-type attachment plug to fit the proper grounding type receptacle. The green (or green and yellow) conductor in the cord is the grounding wire. Never connect this wire to other than the grounding pin of the attachment plug.

If the floor-finishing machine is provided with an attachment plug as shown in sketch A it is intended for use on a nominal 120 volt circuit. If a properly grounded receptacle as shown in sketch A is not available, an adaptor as shown in sketch C should be installed as shown in sketch B if the outlet box that houses the receptacle is grounded. Be sure to fasten the grounding tab with a metal faceplate screw.

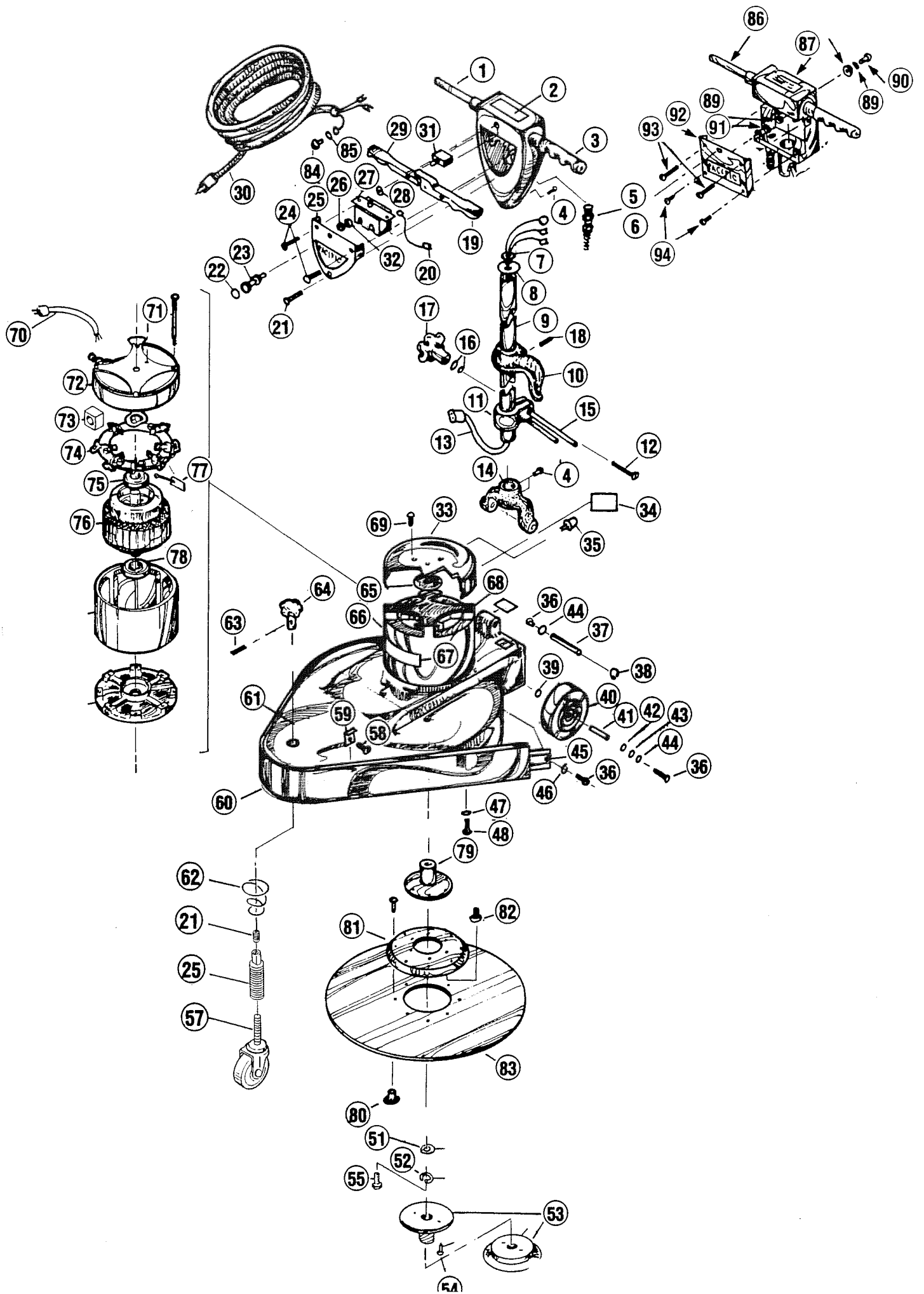
Extension Cords

Use only three-wire 12/3 or larger gauge approved extension cords that have three-prong grounding type plugs and three-pole receptacles that accept the appliance's plug. Replace or repair any damaged cords or plugs.

When servicing, refer to authorized persons only. Use only identical replacement parts.



NOTE: Do not use adaptors shown in figures B & C in Canada.

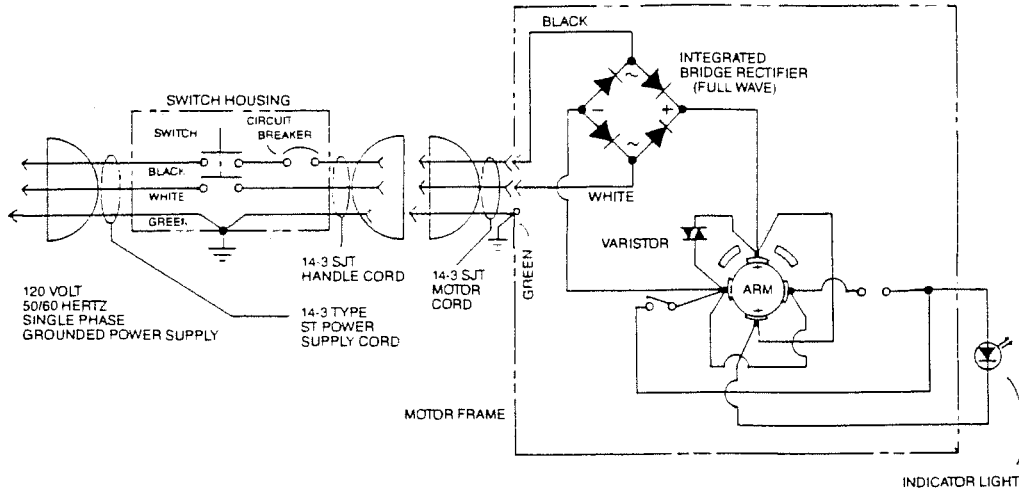


PARTS LIST - DIRECT DRIVE UHS BURNISHERS

ITEM	PART NO.	DESCRIPTION	QTY.
1	514202	Housing Switch - Polished	1
	514203	Housing Switch - Painted	1
2	506310	Label - Warning	1
3	503710	Handle Grip	2
4	962006	Screw - 1/4-20 x 1/2 Pan Hd.	3
5	502020	Strain Relief - Brass Clamp	1
6	508520	Strain Relief Complete	1
7	503320	Flange - Strain Relief	1
8	509830	Washer	1
9	509080	Handle Tube	1
10	504420	Cord Hook	1
11	502021	Handle Clamp	1
12	962009	Bolt - 5/16-18 x 2-1/2	1
13	908001	Handle Cord	1
14	509920	Yoke	1
15	500840	Brace	2
16	980003	Washer	2
17	505010	Turn Knob	1
18	962005	Screw - 1/4-20 x 3/8 Allen Set	1
19	505121	Lever - Switch Left	1
20	911001	Lead Asm. - Circuit Breaker	1
21	962002	Screw - 10-32 x 1/2 Oval Hd.	1
22	506318	Label - Sw. Inst.	1
23	504810	Lock Asm. - Switch	1
24	962011	Screw - 10-32 x 1-3/4 Oval Hd.	2
25	512301	Cover - Switch Box - Polished	1
	512302	Cover - Switch Box - Painted	1
26	920005	Nut - 3/8-24 Hex	1
27	508020	Switch	1
28	509821	Washer	2
29	505120	Lever - Switch Right	1
30	502420	Cord Asm. - #14-3 x 50 Ft.	1
31	501350	Breaker - 18 Amp - 115 Volt	1
	911074	Breaker - 9 Amp - 230 Volt	1
32	517201	Retainer - Switch	1
33	502386	Drip Cover - Motor Plated	1
	512303	Drip Cover - Motor Painted	1
34	506340	Label - Brush Indicator	1
35	505181	Light - Brush Wear Indicator 115 Volt	1
	505182	Light - Brush Wear Indicator 230 Volt	1
36	962006	Screw - 1/4-20 x 1/2 Pan Hd.	5
37	507480	Rod - Yoke	1
38	507310	Retaining Ring 3/8" - Yoke Rod	1
39	980601	Washer - Conical	2
40	509781	Wheel - 1/2 x 5 Grey	2
41	517701	Shaft - Wheel	1
42	980005	Washer - 1/2 Wave	2
43	509820	Washer - Fibre	2
44	980004	Washer - 1/4 Flat	2
45	518001	Strap - Bumper 17	1
	518002	Strap - Bumper 20	1
46	980002	Washer	2
47	980003	Washer - 3/8 Block	4
48	962033	Screw - 3/8-16 x 7/8 Hex Hd.	4
49	962061	Screw - 1/4-20 x 3/4 Set	1
50	518401	Stud	1
51	980014	Washer - 3/8 I.D. x 1-1/8 O.D. x .065	1
52	980006	Washer -5/16 Lock	1

ITEM	PART NO.	DESCRIPTION	QTY.
53	504471	Pad Holder Asm.	1
54	962024	Screw - #10 x 3/4 Wood	3
55	962014	Screw - 5/16-18 x 3/4 Allen	1
56			
57	519701	Caster - 3/8-16 x 2	1
58	962001	Screw - #10-32 x 1/4 Flt. Hd.	2
59	502110	Bumper Clip	2
60	518501	Skirt - Bumper - 20" Unit	1
	518502	Skirt - Bumper - 17" Unit	1
61	513201	Frame - Main 17" Polished	1
	513203	Frame - Main 17" Painted	1
	513202	Frame - Main 20" Polished	1
	513204	Frame - Main 20" Painted	1
62	518003	Spring	1
63	962034	Screw - 8-32 x 1/4 Allen	1
64	515002	Knob	1
65	509823	Washer - Felt	1
66	506391	Label - Motor	1
67	506350	Label - Pacific Motor	1
68	515202	Motor - 1.5 H.P. - 1500 RPM - 115V	1
	515203	Motor - 1.5 HP - 2000 RPM - 115V	1
	515204	Motor - 1.5 H.P. - 2500 RPM - 115V	1
	515206	Motor - 1.5 H.P. - 1500 RPM - 230V	1
	515207	Motor - 1.5 H.P. - 2000 RPM - 230V	1
69	962026	Screw - #8-32 x 1/2 Type F - Phillips	3
70	908024	Cord Asm. - Motor	1
71	960018	Bolt - Motor Thru	4
72	502920	End Bell - Motor Top	1
73	911048	Rectifier - Bridge (For 115V Motors)	1
	911081	Rectifier - Bridge (For 230V Motors)	1
74	507322	Brush Ring Asm. - Complete	1
75	902011	Bearing - Motor Top	1
76	510401	Armature - 115V (For 515203 Motor)	1
	510402	Armature - 115V (For 515202 Motor)	1
	510403	Armature - 115V (For 515204 Motor)	1
	510404	Armature - 230V (For 515206 Motor)	1
	510405	Armature - 230V (For 515207 Motor)	1
77	500903	Brush - Motor (For 115V Units)	4
	510901	Brush - Motor (For 230V Units)	4
78	902012	Bearing - Motor Lower	1
79	510203	Adaptor - Motor (For Flex Drivers)	1
80	515001	Kit - T-Nut & Screws (8 Each/Pkg.)	1
81	510202	Adaptor - Flex Back	1
82	962036	Screw - 1/4-20 x 1 Flt. Hd.	6
83	515901	Pad Driver - Flex - 20" Unit	1
	515906	Pad Driver - Flex 17" Unit	1
84	962015	Screw	2
85	980015	Washer	2
86	505720	Nipple - Handle	2
87	501323	Housing Switch - Painted	1
88	501210	Handle Bumper	1
89	980001	Washer - Flat	1
90	962003	Screw - #10-32 x 3/4 Pan Hd.	1
91	920001	Nut - -10-32 Elastic	1
92	506431	Cover - Switch Box - Painted	1
93	962011	Screw - -10-32 x 1-3/4 Oval Hd.	2
94	962002	Screw - -10-32 x 1/2 Oval Hd.	2

DIRECT DRIVE UHS BURNISHER WIRING DIAGRAM



PACIFIC'S LIMITED WARRANTY

This Pacific Industrial Maintenance Machine has been manufactured, tested and inspected in accordance with specific engineering requirements, is **WARRANTED** to be free from defects in workmanship and materials for a period as noted below from the date of purchase.

- A.) Eighteen (18) months - Models 1517, 2017, 2517, 1520, 2020, & 2520
- B.) One (1) year - Models 1517P, 2017P, 1520P, & 2020P

This warranty extends to the original user/purchaser and only when used, operated and maintained in accordance with Pacific's Operating and Maintenance instructions.

This warranty does not apply to certain wear parts and accessories of the machine such as electrical cords, carbon motor brushes, pad drivers, plates, etc., nor does it apply to damage or failure caused by improper use, abuse or neglect.

To secure repair under this warranty, the following procedure should be taken:

- The inoperative machine or warranted parts must be delivered to the authorized dealer with shipping and delivery charges prepaid. If unable to locate the Dealer, you may contact Pacific Floor Machine Co. at the address listed herein for the location of the nearest Pacific repair center or agent or for other instructions pertaining to your warranty difficulty.
- Upon compliance with the above warranty procedure, all warranted repairs will be completed at no additional charge or cost to the user.
- Only Pacific Floor Machine Co. or its authorized dealers and agents may make no charge warranty repairs on this product. All others do so at their own risk.

This warranty limits Pacific's liability to the repair of the product and/or warranted parts replacement and does not include incidental or consequential damages arising from the use of a Pacific machine whether defective or not.

This warranty is in lieu of all other expressed or implied warranties and is extended to the original purchaser/user.

PACIFIC FLOOR MACHINE COMPANY, INC. 2259 S. SHERIDAN
MUSKEGON, MICHIGAN 49442

FLOOR MACHINE COMPANY, INC.

2259 S. SHERIDAN
MUSKEGON, MI 49442-6252
PHONE: (616) 773-1330
FAX: (616) 773-1642